

The operation, and interpretations made based on the use, of this product is the sole responsibility of the operator. Please make sure to read the full disclaimer in the *MALÅ GeoDrone 600* and *MALÅ Controller App User guides* before operating the product.

Quick Guide

MALÅ GeoDrone 600

Set up

Make sure the battery is charged, and the hatch of the battery compartment properly closed.

Attach the MALÅ GeoDrone 600 to your drone.

To prevent damage to the equipment, make sure the MALÅ GeoDrone 600 is securely attached prior to flight and do not use the GeoDrone 600 as landing gear.

Connect the included DGPS antenna. Attach the DGPS antenna on top of the drone for best reception.

A complimentary payload mounting kit is available for easy attachment to common drone models.

Please contact Guideline Geo or your local representative for information on the mounting kit as well as information on Extended Warranty if needed.


Now you are ready to power up the MALÅ GeoDrone 600 and start the data acquisition software, MALÅ Controller App.





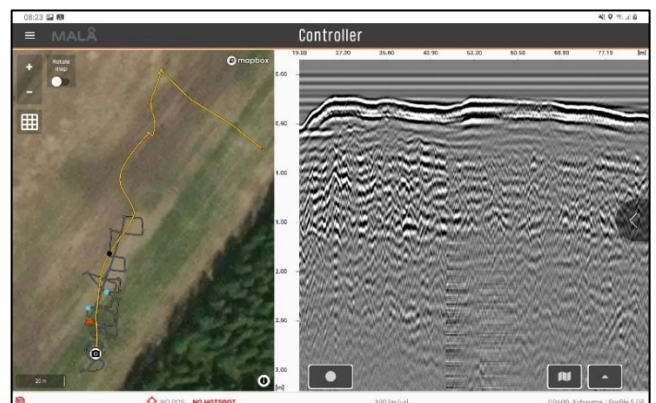
Note: Land the drone smooth and carefully to not harm the equipment.

Start measurements with MALÅ Controller App

Start the MALÅ Controller App and select 2D or Project Manager to continue an existing project.

Make sure you have connection to the GeoDrone 600 unit 

Check the Measurement settings in the Main menu  and start the measurements by pressing  on the Measurement screen.



Press  to stop a profile. Data is automatically stored in the mobile device.

Note: During remote operation (when the GeoDrone antenna is out of Wi-Fi reach of the tablet), or if the Wi-Fi is disrupted when working locally, the in-built memory card in the antenna will store the GPR data and thus enabling the measurement to continue. To stop the measurement, the GeoDrone antenna must come back into Wi-Fi range of the tablet. Restore of missing traces will start automatically.