



MALÅ
by Guideline Geo

MIRA product range

3D GPR solutions for large area mapping

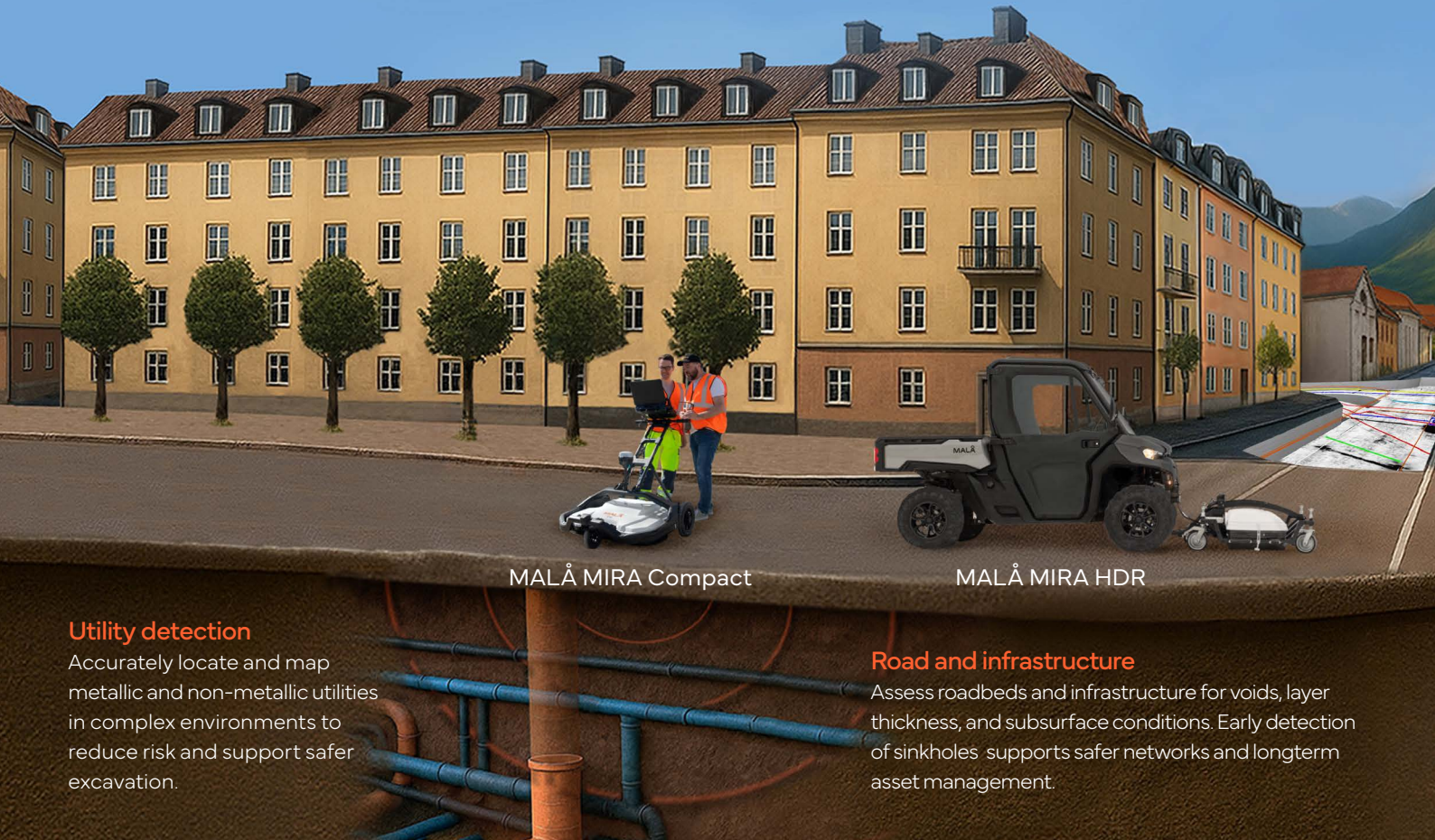


Guideline Geo

MALÅ MIRA – Turning subsurface complexity into actionable insight

MALÅ MIRA is a family of powerful and versatile 3D Ground Penetrating Radar solutions designed to help professionals clearly and confidently visualize the subsurface. Built on MALÅ and Guideline Geo's long-standing leadership in 3D GPR array technology, the MIRA family delivers high-resolution subsurface imaging together with efficient workflows and intuitive software.

From large-scale infrastructure projects to detailed urban surveys and sensitive archaeological investigations, MALÅ MIRA enables users to collect more data in less time, reduce uncertainty, and make better-informed decisions. With scalable hardware options and an intuitive and comprehensive software ecosystem, MIRA is a future-ready, high-capacity solution for subsurface mapping.



GPR and the MIRA method

Ground-penetrating radar (GPR) is a geophysical method that uses radio waves (typically between 30-3000 MHz) to non-destructively image the subsurface without excavation. It sends short pulses into the ground and records reflections from different materials to map buried objects and layers.

MIRA (MALÅ Imaging Radar Array) is a multichannel 3D GPR array solution continuously being developed by Guideline Geo. This fast and proven 3D mapping technology uses a unique data channel geometry to collect true one-pass 3D GPR data, revealing what lies hidden in the subsurface.

The MIRA Family

All MALÅ MIRA products take full advantage of the HDR real-time sampling technology, giving users the best possible data quality, resolution and depth range.

MIRA HDR

MALÅ MIRA HDR is the standard solution for everyday 3D mapping applications. With an effective one-pass swath coverage of 1.4 m, it delivers strong productivity while remaining compact enough for versatile and mobile operation. Vehicle-mounted measurements are recommended.

MIRA Compact

MALÅ MIRA Compact delivers the same high-resolution output as the MIRA HDR solution, but in a smaller and more portable format. With an effective swath coverage of 0.6 m, the Compact solution is designed for hand-pushed surveys while also supporting vehicle-mounted operation using optional carrier solutions.



MALÅ MIRA Tow Hitch Carrier

Geological and environmental studies

Map stratigraphy and subsurface conditions for geological research and environmental assessments, including UXO and underground storage tank detection.

Archaeological investigations

Identify buried structures and features without disturbing sensitive sites, supporting efficient and non-invasive heritage surveys.

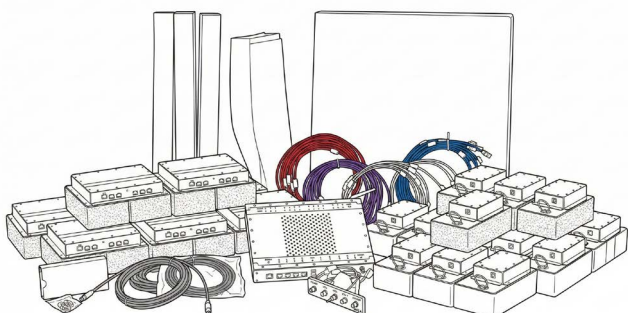
MIRA Flex

MALÅ MIRA Flex is the customizable solution in the MIRA family, developed for specialized survey applications and mounted tailored configurations. It is offered to qualified customers with specific needs and is primarily intended for organizations purchasing multiple systems rather than single units.

Adapted to your workflow

MALÅ MIRA is designed to adapt to your workflow. A range of accessories, options, and add-ons allows each system to be configured for specific applications and environments. Integrated positioning solutions help optimize survey accuracy, while different carrier solutions and carts improve ergonomics and enable operation across varying terrain conditions. Flexible power options support extended field operations.

With these configurable components, Guideline Geo ensures that your MIRA system works the way you do - efficiently, comfortably, and reliably.

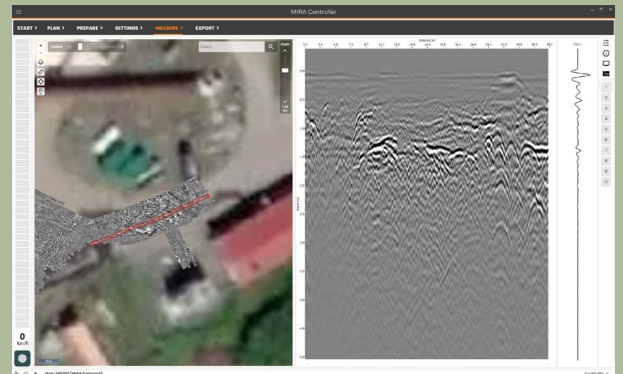


MIRA Software

MALÅ MIRA software is an essential and integrated part of any 3D GPR solution. MIRA Controller and MALÅ Vision Desktop are carefully developed and aligned with the MALÅ MIRA hardware to ensure ease of use, efficient workflows, and best possible results. The MALÅ MIRA software solution guides users throughout the entire process - from survey planning to final reporting.

MALÅ MIRA Controller

MALÅ MIRA Controller is a dedicated data acquisition software for all Guideline Geo's MIRA solutions. It offers an intuitive interface for channel configuration, data collection, and file management, and supports integration with different positioning systems. Projects are seamlessly transferred to MALÅ Vision Desktop for processing, interpretation, and reporting.

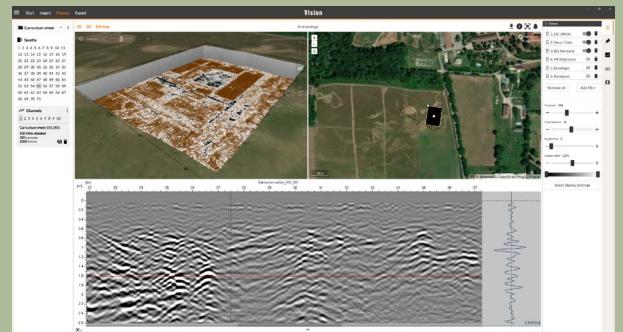


MALÅ Vision Desktop

MALÅ Vision Desktop is a fast and intuitive software for processing, analyzing, and reporting 3D GPR array data from MALÅ MIRA systems. Built on the proven MALÅ Vision platform, it is optimized for large datasets and provides immediate visual feedback with multiple viewing modes, including map, 2D, and 3D. Proprietary interpolation and a guided workflow make interpretation efficient and accessible.

The software runs entirely offline using local computer resources, delivering results in minutes rather than hours. Automated processing and depth-slice generation streamline workflows, while exporting reports, depth slices, and interpreted objects is quick and straightforward using standard industry formats.

Together with MIRA Controller, the MALÅ MIRA software suite supports the full workflow – from survey planning and data acquisition to processing, interpretation, and final reporting.



Guideline Geo

Guideline Geo is a world-leader in geophysics and geo-technology offering sensors, software, services and support necessary to map and visualize the subsurface.

We provide complete solutions and applications expertise around the globe in four key growth areas: detecting and mapping groundwater, environmental and geological risk assessments, infrastructure site investigations and mineral exploration.

In 2012 Guideline Geo consolidated its two subsidiaries ABEM and MALÅ to offer unparalleled technical expertise, innovative solutions and world-leading global brands.